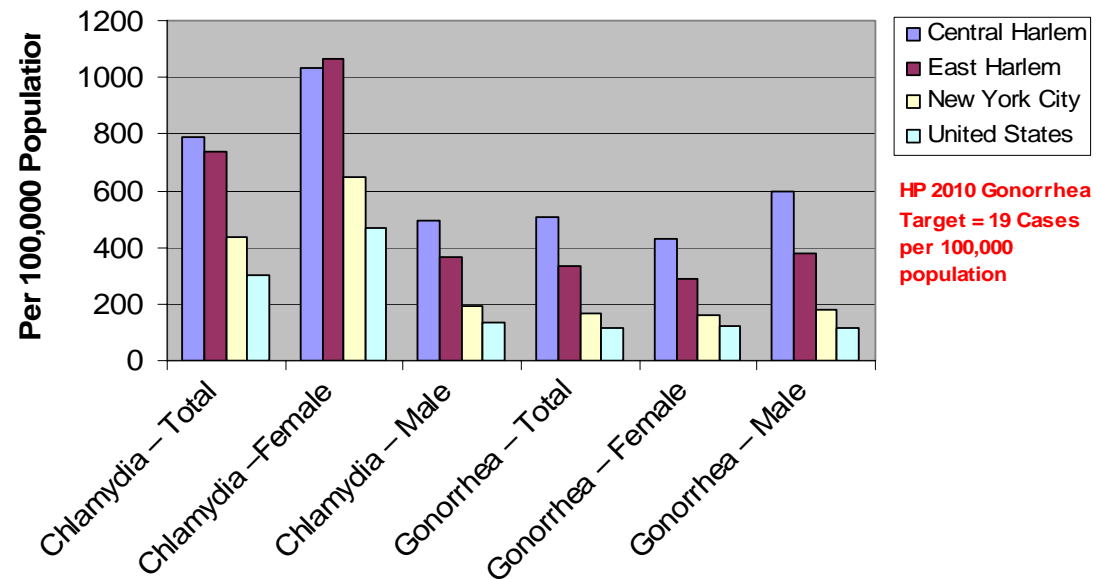


New Chlamydia, Gonorrhea and Primary & Secondary Syphilis Cases by Sex, 2003

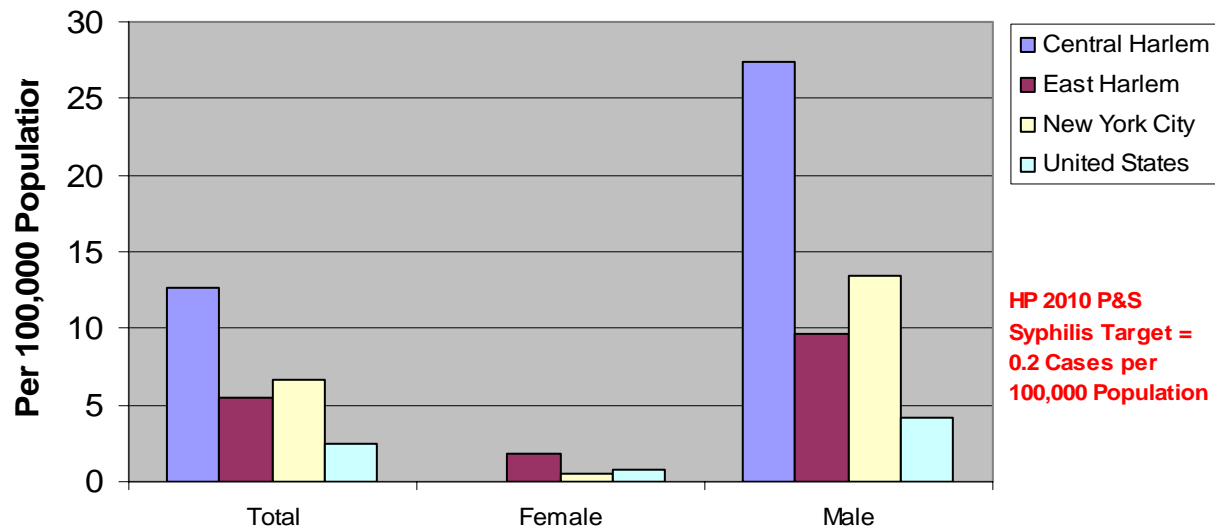
What are the incidents rates of leading sexually transmitted infections among Harlem adults compared to New York City and the United States?

<i>Rates per 100,000</i>	Harlem		NYC	United States*	Central Harlem Disparity (w/NYC)	Central Harlem Disparity (w/U.S.)	Healthy People 2010 Target
	Central	East					
Chlamydia – Total	789	735	434	304	+82%	+160%	
Chlamydia – Female	1036	1066	645	468	+61%	+121%	
Chlamydia – Male	497	364	195	135	+155%	+268%	
Gonorrhea – Total	506	331	168	116	+201%	+336%	19
Gonorrhea – Female	427	291	159	119	+169%	+259%	
Gonorrhea – Male	599	376	177	113	+238%	+430%	
Primary & Secondary Syphilis – Total	12.6	5.5	6.6	2.5	+91%	+404%	0.2
Primary & Secondary Syphilis – Female	0	1.8	0.5	0.8	-100%	-100%	
Primary & Secondary Syphilis – Male	27.4	9.7	13.4	4.2	+104%	+552%	

New Chlamydia & Gonorrhea Cases, 2003



New Primary & Secondary Syphilis Cases, 2003



The rates of chlamydia, gonorrhea are highest among Harlem residents when compared to New York City and the United States. Females have a significantly higher chlamydia rate, whereas males have a slightly higher gonorrhea rate. East Harlem males have an extremely high rate of primary and secondary syphilis compared to New York City and the United States, whereas East Harlem males have a much lower rate falling below the New York City rate.

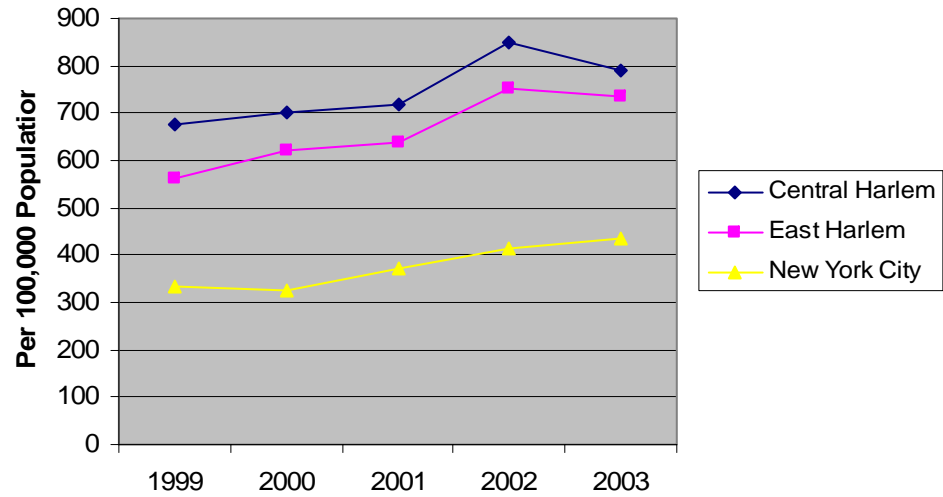
Source: NYC DOHMH, Bureau of STD Control

*CDC, National Center for HIV, STD and TB Prevention - Division of Sexually Transmitted Diseases

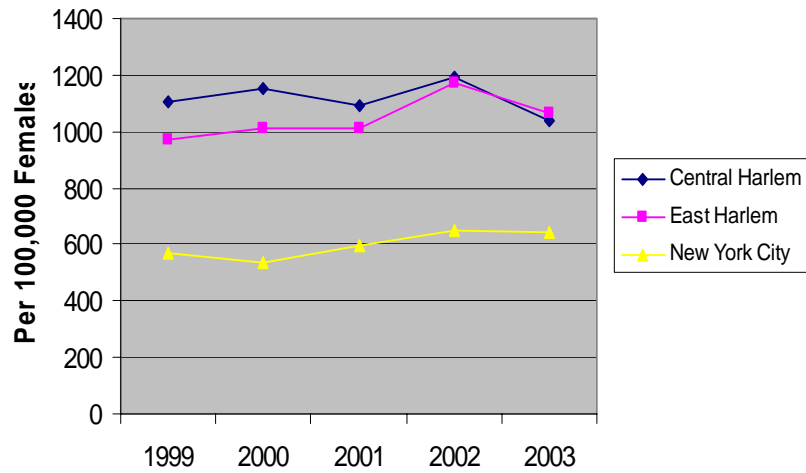
http://www.cdc.gov/nchstp/dstd/Stats_Trends/Stats_and_Trends.htm

Chlamydia Case Rates Over 5 Years

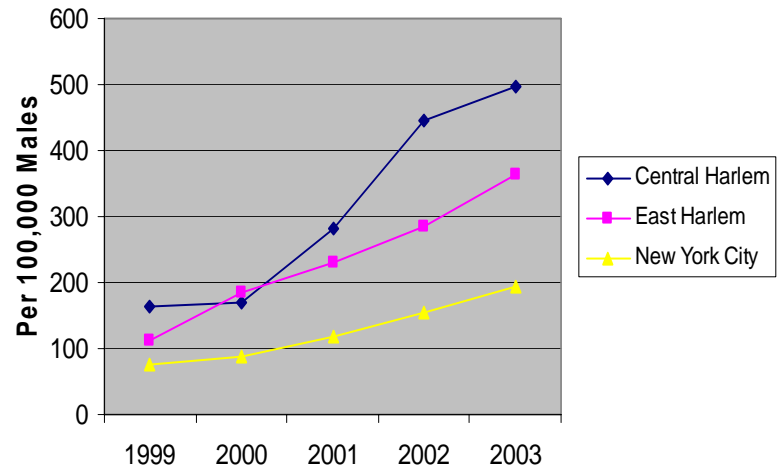
Total Chlamydia Case Rates, 1999-2003



Female Chlamydia Case Rates, 1999-2003

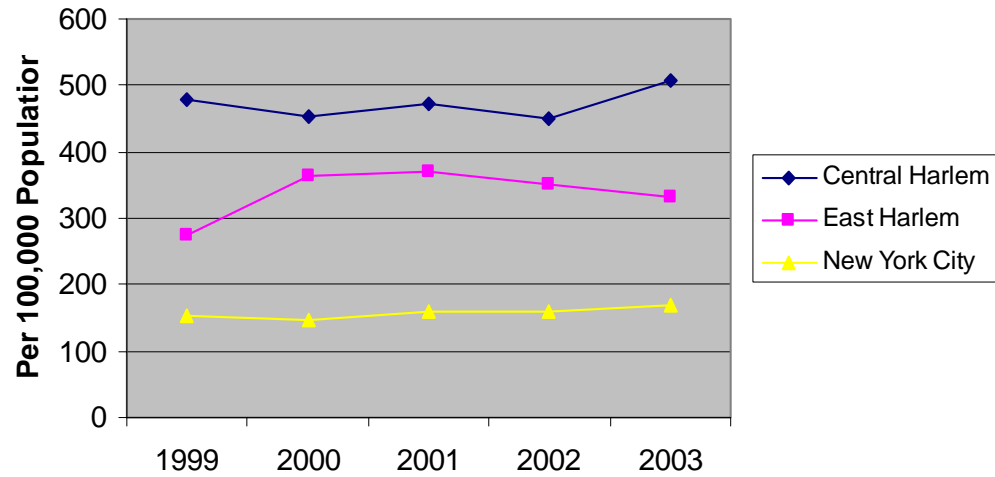


Male Chlamydia Case Rates, 1999-2003

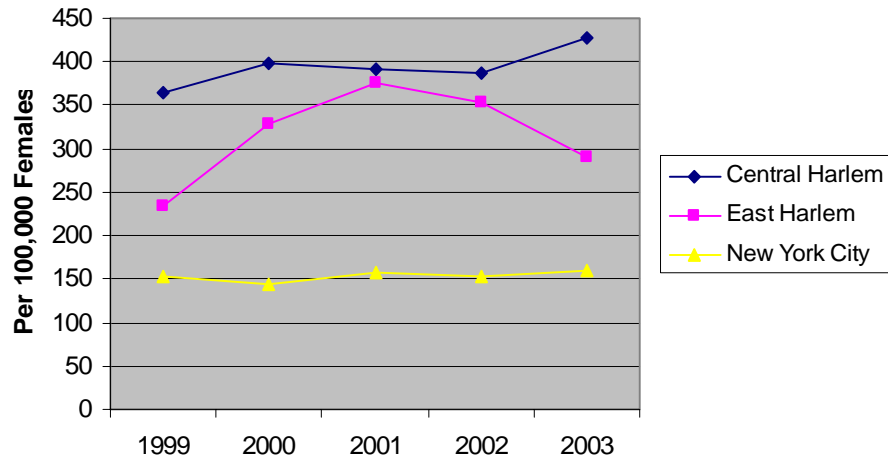


Gonorrhea Case Rates Over 5 Years

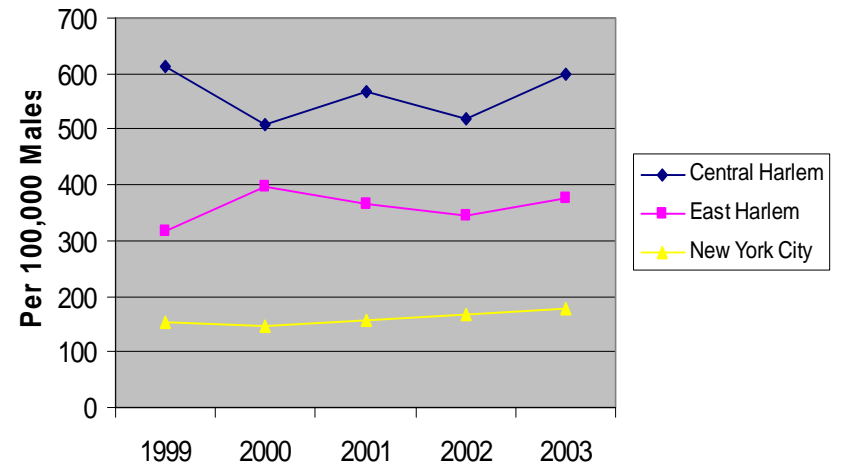
Total Gonorrhea Case Rates, 1999-2003



Female Gonorrhea Case Rates, 1999-2003

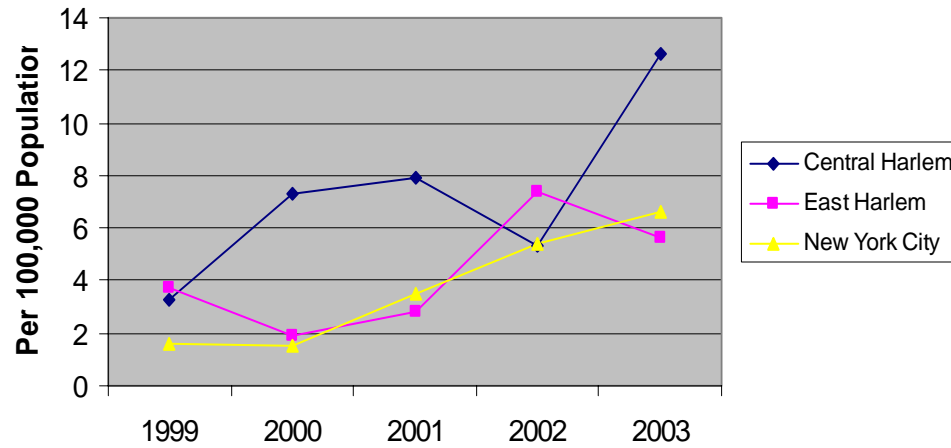


Male Gonorrhea Case Rates, 1999-2003

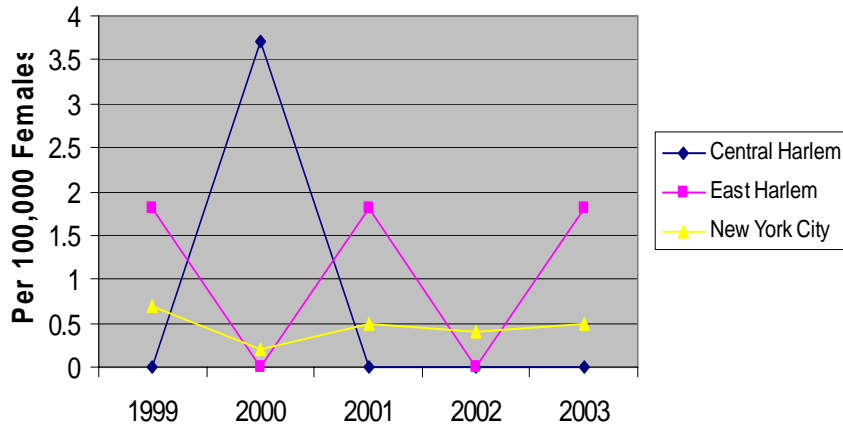


Primary & Secondary Syphilis Case Rates Over 5 Years

**Total Primary & Secondary Syphilis Case Rates,
1999-2003**



**Female Primary & Secondary Syphilis Case Rates,
1999-2003**



**Male Primary & Secondary Syphilis Case Rates,
1999-2003**

