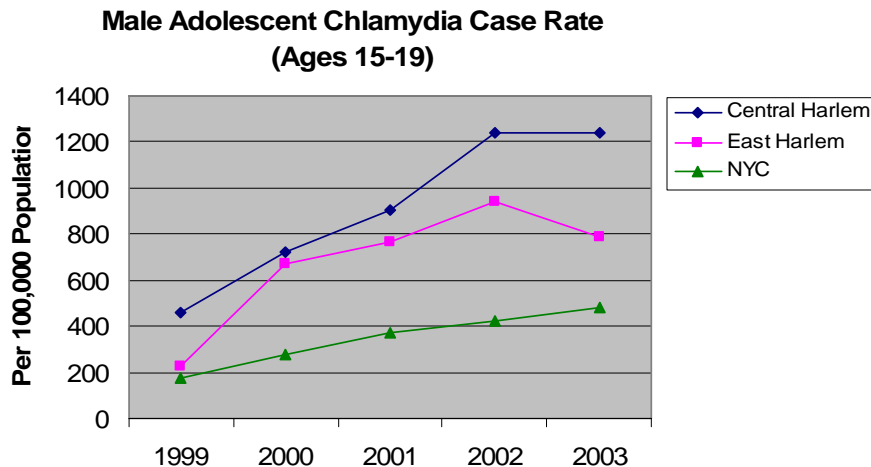
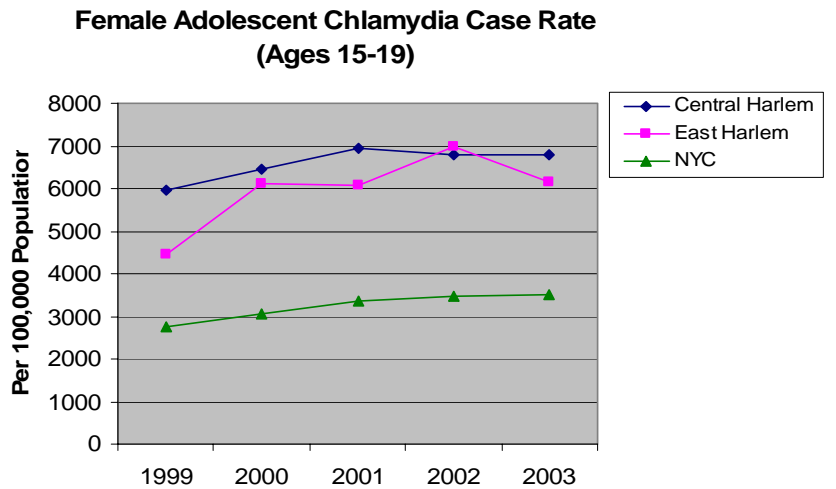


Profile on Adolescents in Harlem:

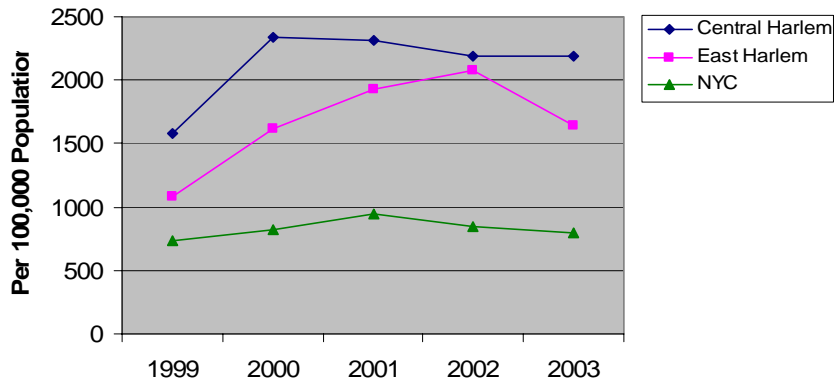
According to the 2000 U.S. Census 17,331 adolescents between the ages of 12 and 19 reside in Central Harlem and 13,261 adolescents reside in East Harlem. Both Central and East Harlem adolescents comprise 27% of the total adolescent population living in the borough of Manhattan. In addition, 12,176 young adults between the ages of 20-24 live in Central Harlem and 9,151 live in East Harlem. Combined Harlem young adults make up 18% of all young adults between the ages of 20-24 living in Manhattan. Adolescents living in Central and East Harlem have disproportionately higher rates of sexually transmitted infections (STIs) and pregnancy, compared to their New York City counterparts. A significant number of adolescents living with HIV/AIDS in Manhattan are from Harlem. Some of the major causes of morbidity for adolescents living in Harlem include asthma, pregnancy complications, depressive disorder and homicide.

Sexually Transmitted Infections

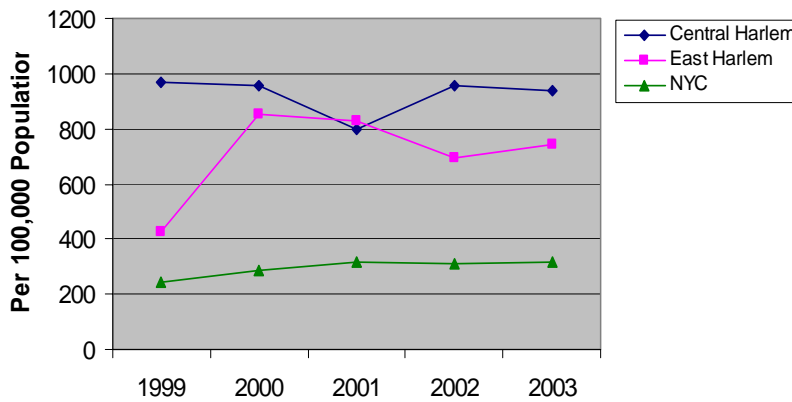
In 2003, the adolescent (15-19 years) chlamydia case rate in Harlem was 85% higher for females and over 100% higher for males compared to New York City adolescent rates.¹ The gonorrhea case rate for adolescents in Harlem was 140% higher for females and 165% higher for males than the rates in New York City.¹



**Female Adolescent Gonorrhea Case Rate
(Ages 15-19)**



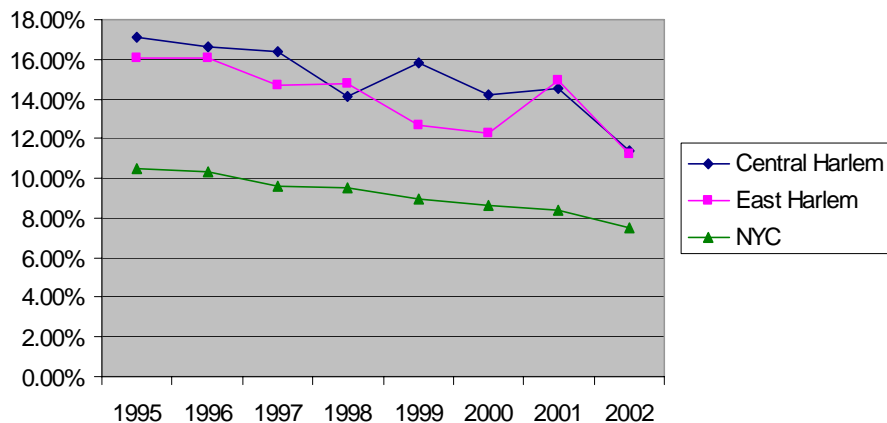
**Male Adolescent Gonorrhea Case Rate
(Ages 15-19)**



Teenage Pregnancies

Based on New York City Department of Health and Mental Hygiene's Summary of Vital Statistics, in 2002 nearly 11.5% of all live births in Central and East Harlem are to adolescents compared to 7.5% in New York City.²

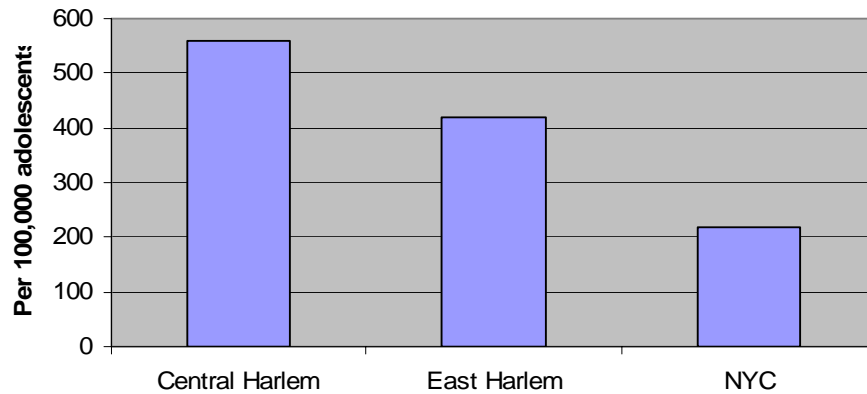
Percent of Total Live Births to Teenagers



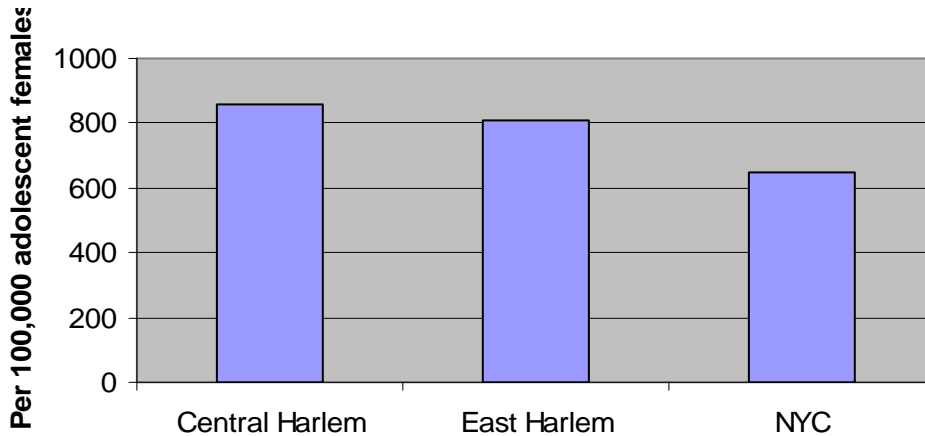
Hospitalization Rates

Some of the leading causes of hospitalization for adolescents living in Harlem are asthma, depressive disorder, homicides and pregnancy complications. In 2003, the asthma hospitalization rate for adolescents living in Central and East Harlem was 125% higher than the New York City rate.³ Hospitalizations due to pregnancy complications for adolescents in Harlem is nearly 30% higher than the adolescent rate in New York City.³ In Central Harlem homicides is the third leading cause of hospitalization for adolescents whereas depressive disorders rank third for adolescents living in East Harlem.³

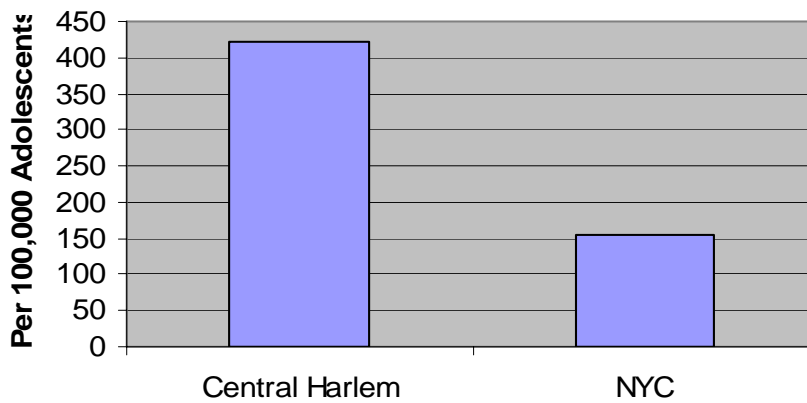
**Asthma Hospitalization Rates for Adolescents
(Aged 13-18), 2003**



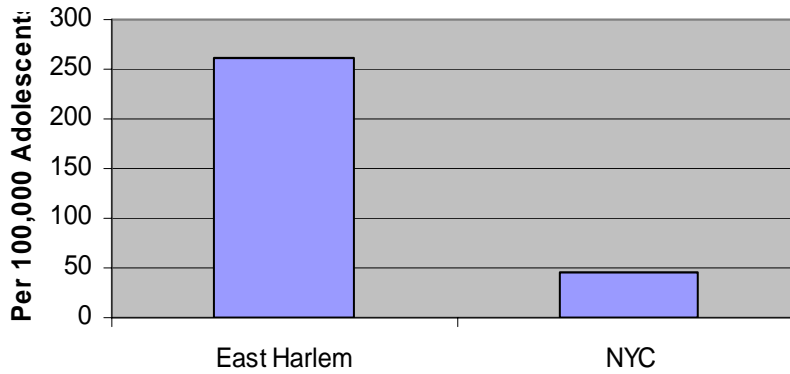
**Pregnancy Complication Hospitalization Rates for
Adolescent Females (Aged 13-18), 2003**



Homicide Hospitalization Rates for Adolescents (Aged 13-18), 2003



Depressive Disorder Hospitalization Rates for Adolescents (Aged 13-18), 2003



1. NYC DOHMH, Bureau of STD Control
2. NYC DOHMH, Summary of Vital Statistics
3. NYS DOH, Statewide Planning and Research Cooperative System, 2003