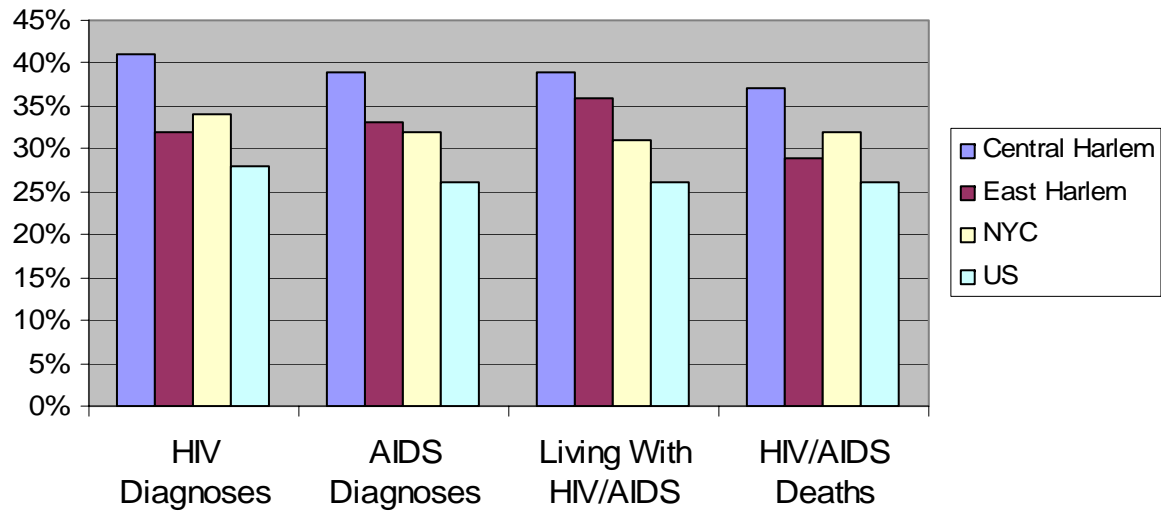


Percent of HIV/AIDS Cases that are Females, 2002

	Harlem		NYC	United States*	Central Harlem Disparity (w/NYC)	Central Harlem Disparity (w/U.S.)
	Central	East				
Total HIV Diagnoses	247	168	4,591	26,464		
% Female	41%	32%	34%	28%	+21%	+46%
Total AIDS Diagnoses	187	136	4,167	42,136		
% Female	39%	33%	32%	26%	+22%	+20%
Total # of People Living With HIV/AIDS	3,399	2,508	82,810	281,931		
% Female	39%	36%	31%	26%	+26%	+50%
Total HIV/AIDS Deaths	131	94	2,456	16,371		
% Female	37%	29%	32%	26%	+16%	+42%

What percentage of HIV/AIDS Diagnoses, People Living with HIV/AIDS and Deaths are Female?



Transmission Risk Factors, 2002

What are the major HIV/AIDS transmission risk factors among Harlem residents compared to New York City and the United States?

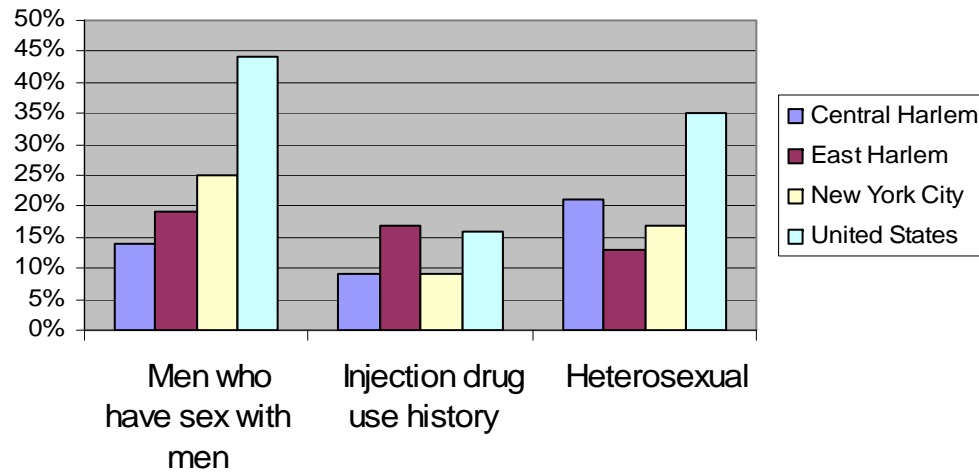
	Harlem		NYC	United States*	Central Harlem Disparity (w/NYC)	Central Harlem Disparity (w/U.S.)
	Central	East				
HIV Diagnoses						
Men who have sex with men	14%	19%	25%	44%	-44%	-68%
Injection drug use history	9%	17%	9%	16%	No Difference	-44%
Heterosexual	21%	13%	17%	35%	+24%	-40%
AIDS Diagnoses						
Men who have sex with men	15%	15%	21%	40%	-29%	-63%
Injection drug use history	18%	22%	16%	24%	+13%	-25%
Heterosexual	21%	27%	18%	29%	+17%	-28%
People Living With HIV/AIDS						
Men who have sex with men	19%	16%	26%	44%	-27%	-57%
Injection drug use history	30%	36%	26%	19%	+15%	+58%
Heterosexual	20%	19%	18%	28%	+11%	-29%
HIV/AIDS Deaths						
Men who have sex with men	11%	<5 cases	13%	33%	-15%	-67%
Injection drug use history	44%	49%	44%	36%	No Difference	+22%
Heterosexual	17%	22%	16%	22%	+6%	-23%

Sources: NYC DOHMH, HIV Epidemiology Program, *HIV/AIDS Surveillance Statistics 2002*.

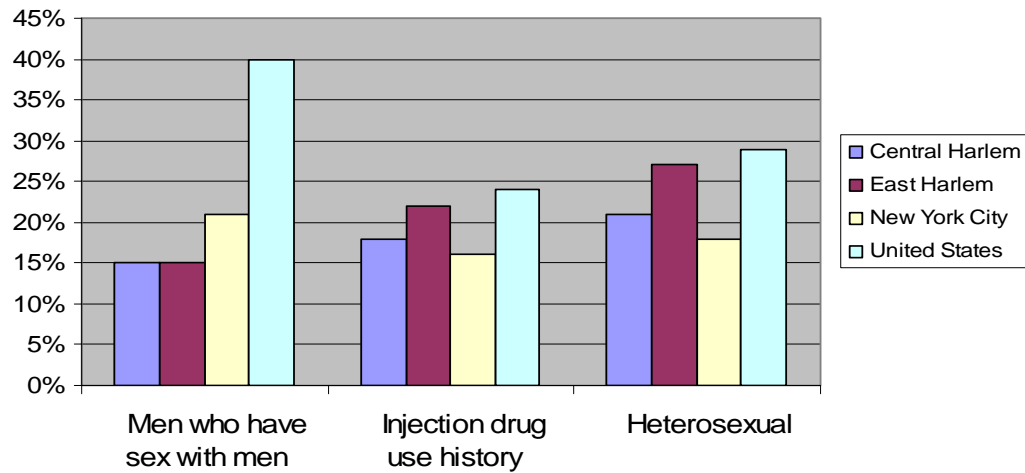
*CDC National Center for HIV, STD and TB Prevention, *Cases of HIV Infection and AIDS in the United States, 2003*.

<http://www.cdc.gov/hiv/stats/hasr1402/table1.htm>

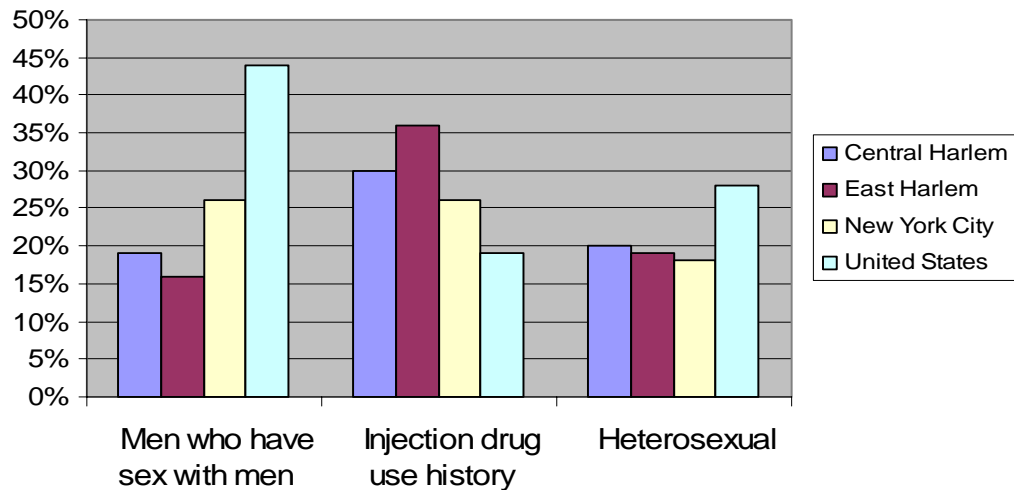
HIV Diagnoses According to Major Transmission Risk Factors, 2002



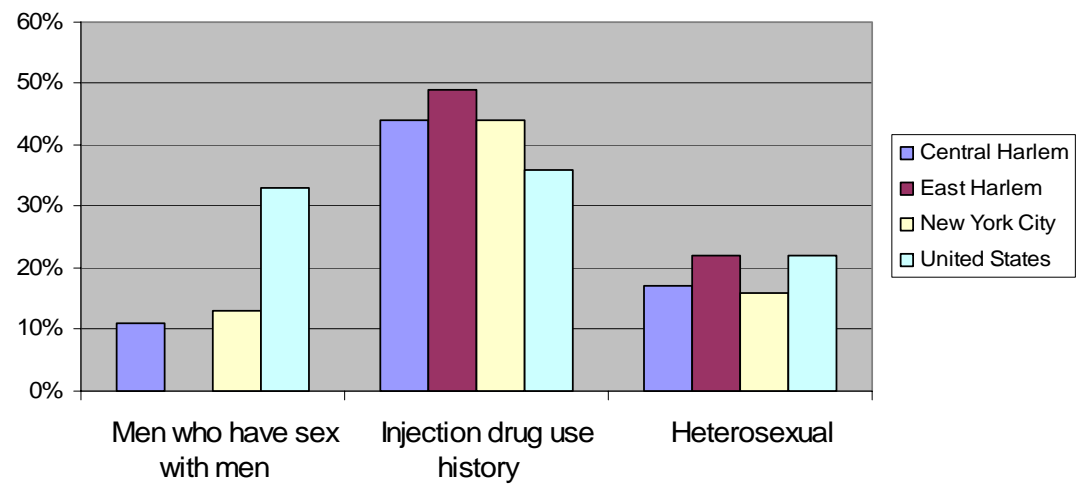
AIDS Diagnoses According to Major Transmission Risk Factors, 2002



People Living With HIV/AIDS According to Major Transmission Risk Factors, 2002

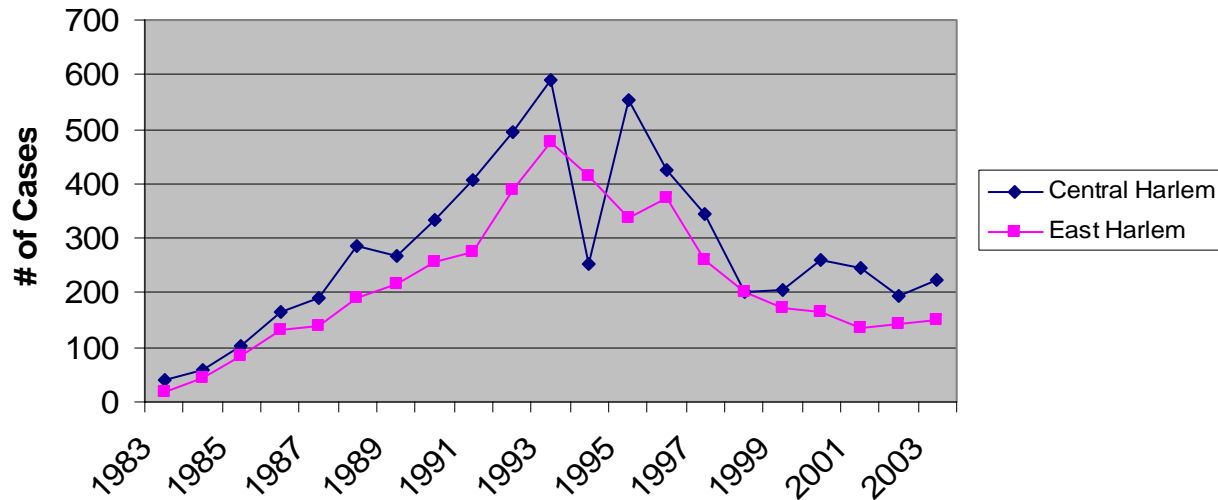


HIV/AIDS Deaths According to Major Transmission Risk Factors, 2002

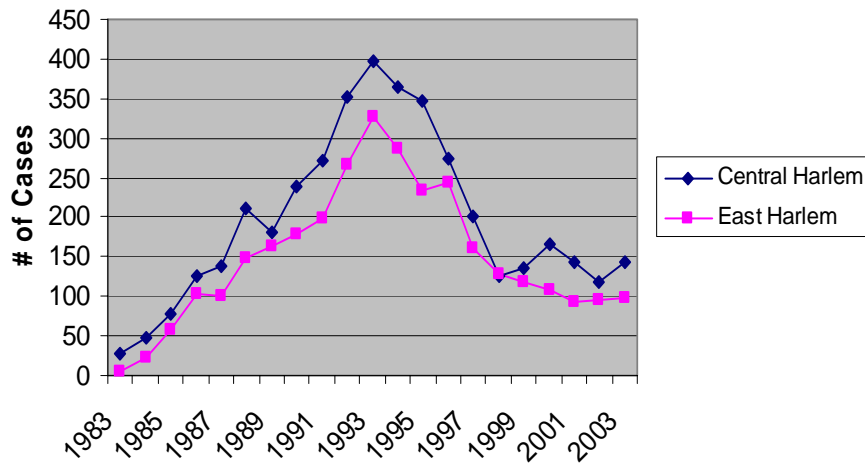


Harlem HIV/AIDS Trends Over Time By Sex

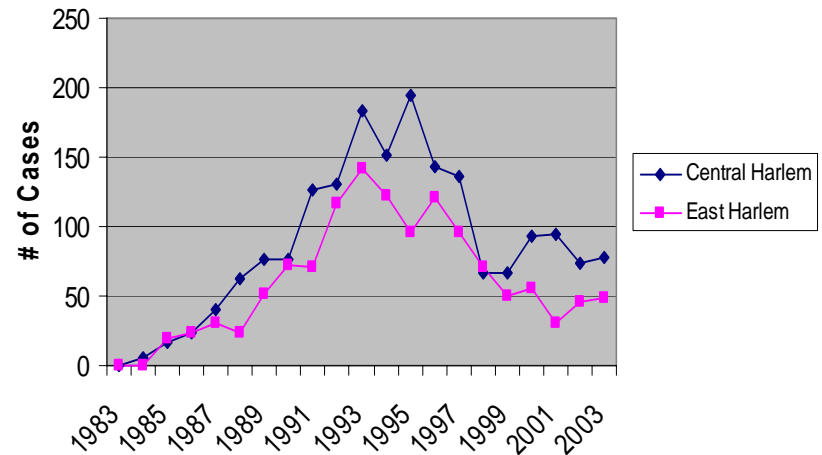
Total AIDS Diagnoses, 1983-2003



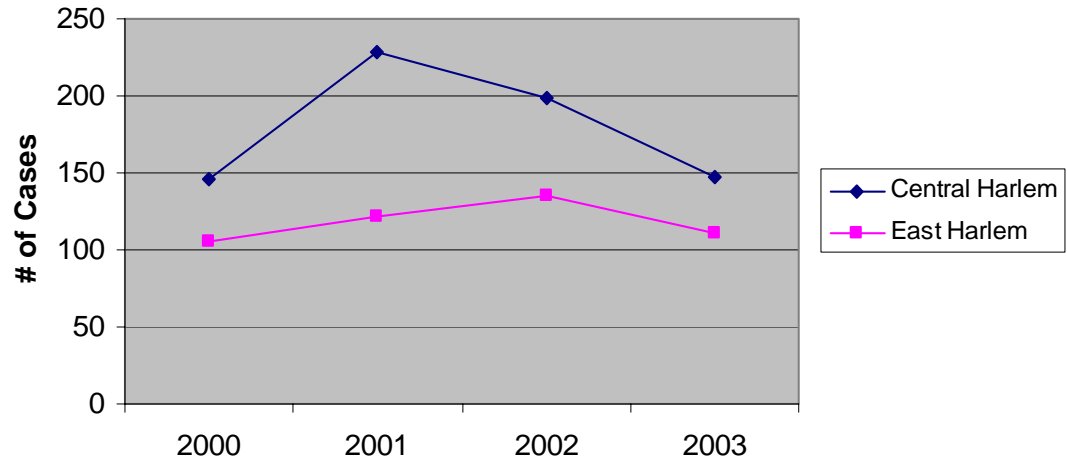
Male AIDS Diagnoses, 1983-2003



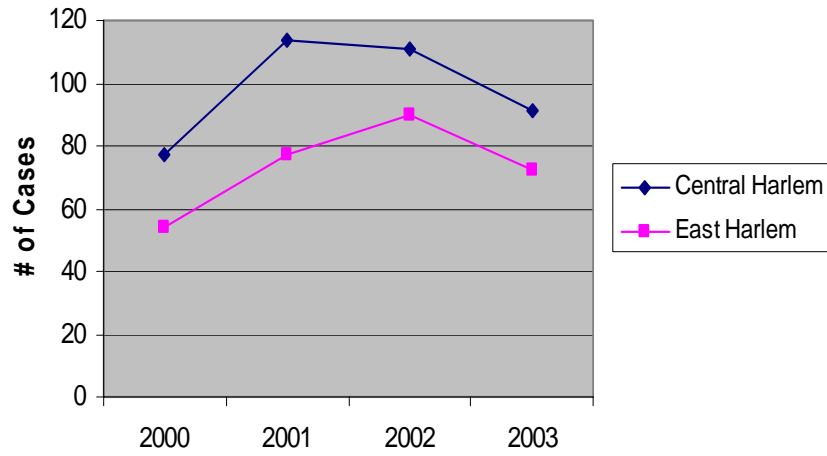
Female AIDS Diagnoses, 1983-2003



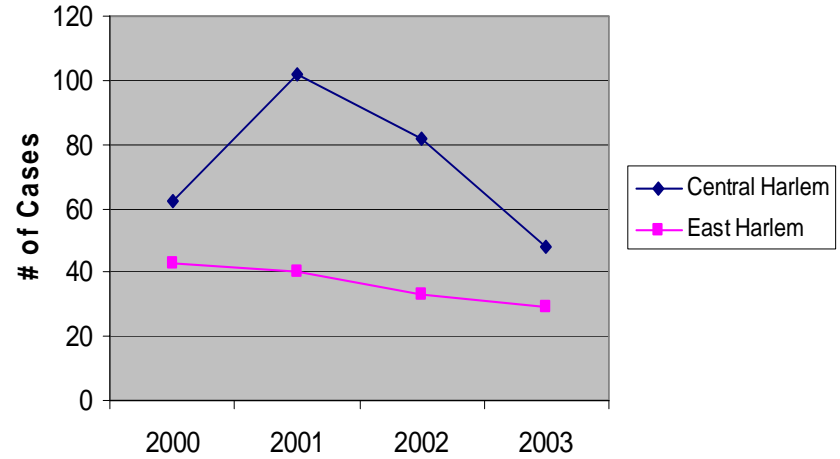
Total HIV Diagnoses (without AIDS), 2000-2003



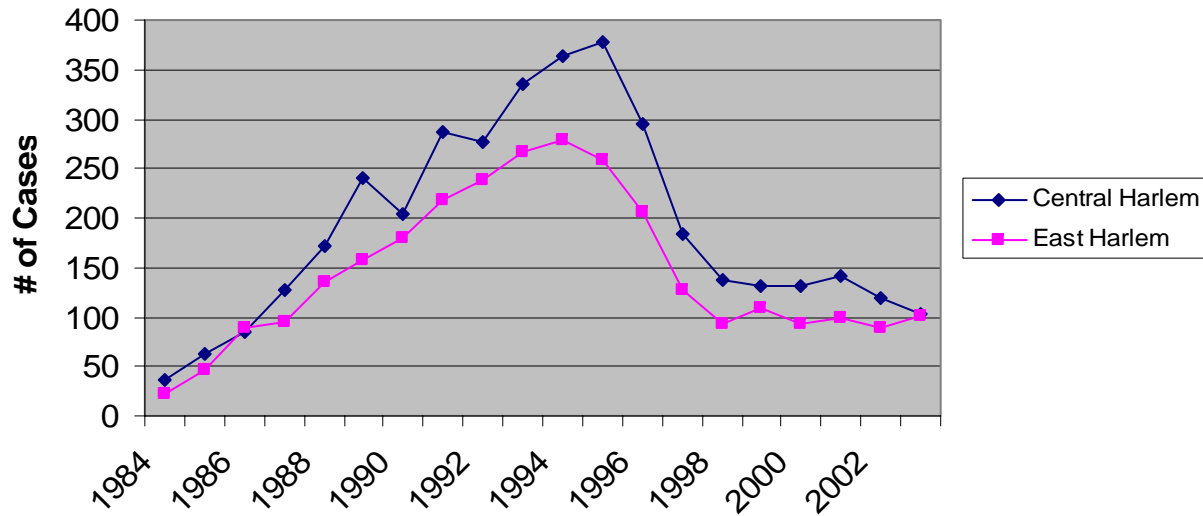
Male HIV Diagnoses (Without AIDS), 2000-2003



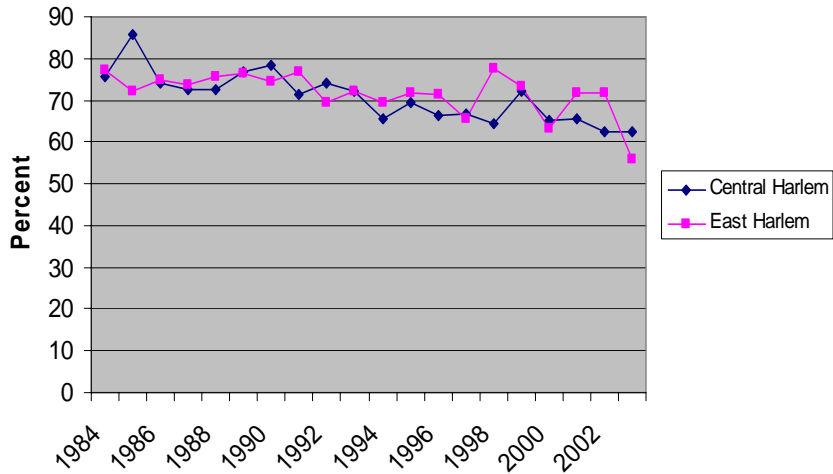
Female HIV Diagnoses (Without AIDS), 2000-2003



Total # of Deaths Among People With HIV/AIDS, 1984-2003



Percent of Total HIV/AIDS Deaths to Males, 1984-2002



Percent of Total HIV/AIDS Deaths to Females, 1984-2002

