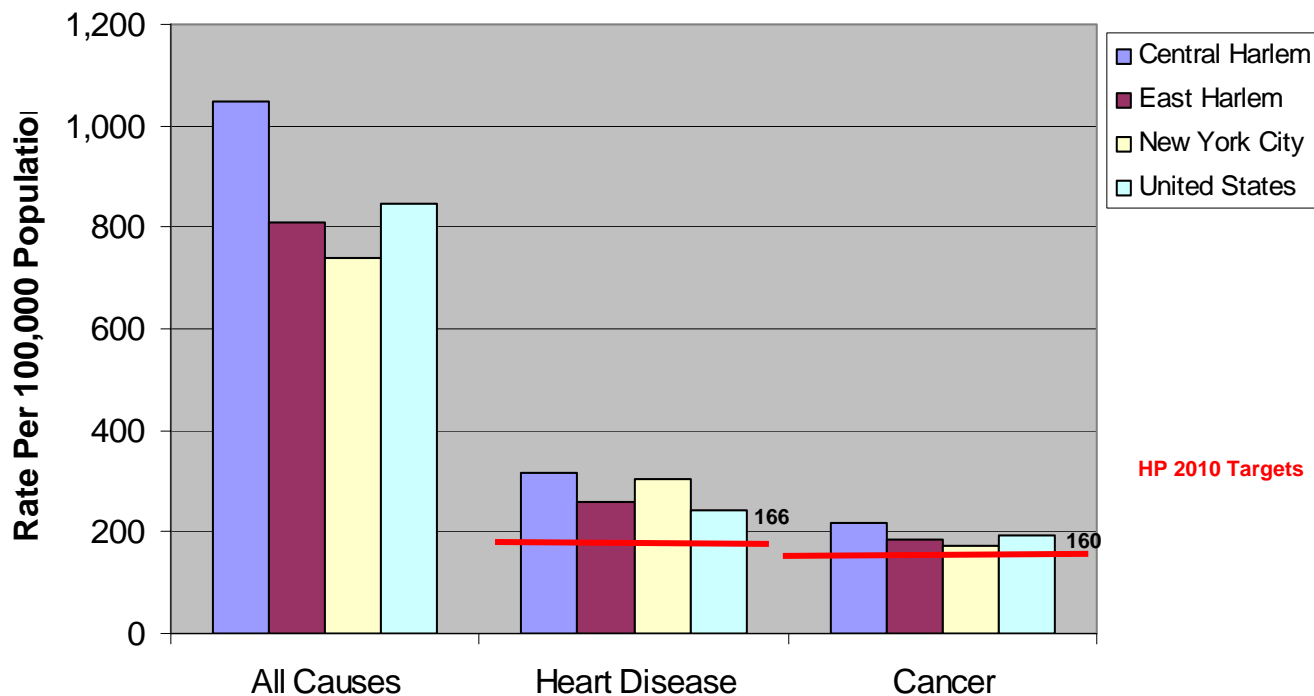
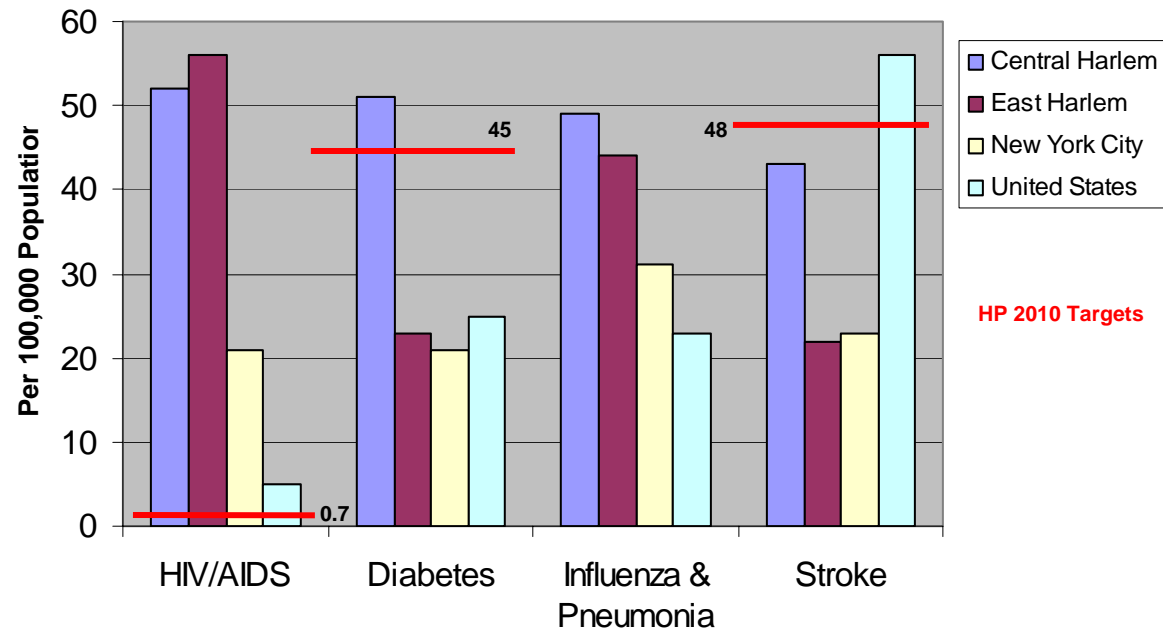


What are the major causes of death in Central & East Harlem?

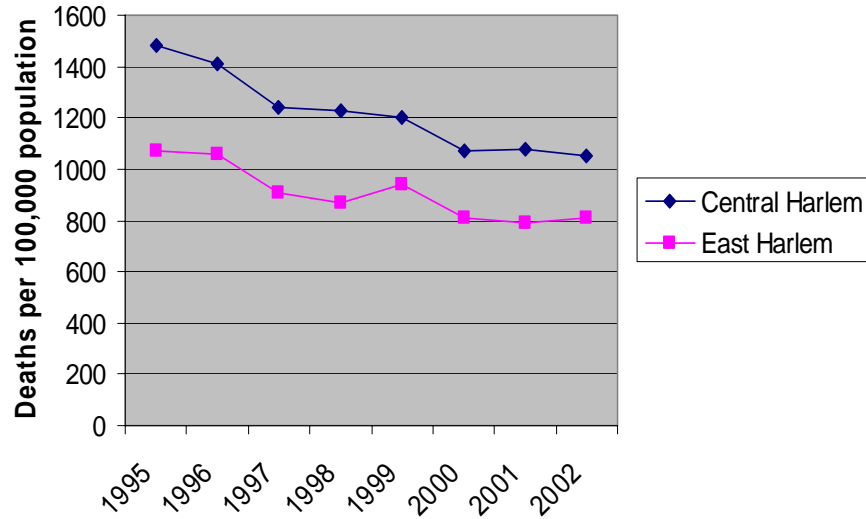
<i>Death Rates per 100,000</i>	Harlem		NYC	United States*	Central Harlem Disparity (w/NYC)	Central Harlem Disparity (w/U.S.)	Healthy People 2010 Target
	Central	East					
All Causes	1,050	810	740	845	+40%	+25%	??
Heart Disease	318	259	306	241	+5%	+30%	166
Cancer	217	183	172	194	+25%	+10%	160
HIV/AIDS	52	56	21	5	1.5 times	9.5 times	0.7
Diabetes	51	23	21	25	+145%	+105%	45
Influenza & Pneumonia	49	44	31	23	+60%	+110%	Only hospitalization rate, not death rate
Stroke	43	22	23	56	+85%	-25%	48



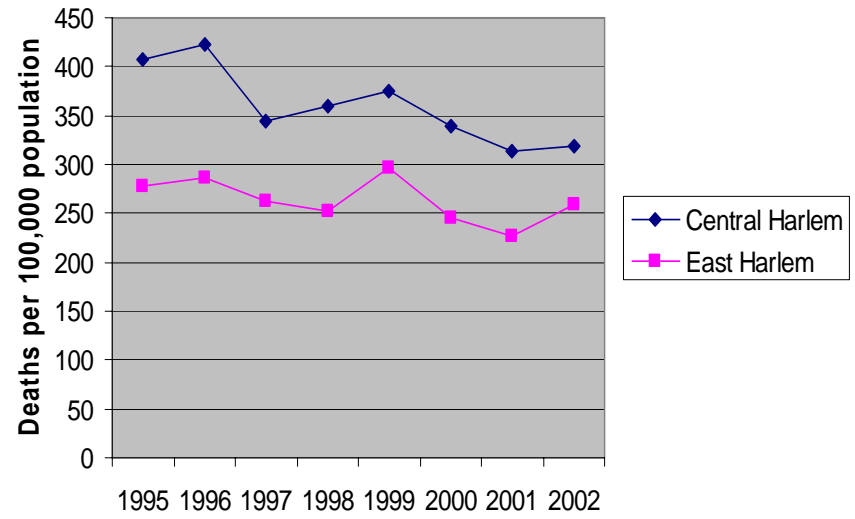


Source: NYC DOH, 2002 Summary of Vital Statistics
 *CDC, National Vital Statistics Reports, Vol. 53, No. 5, 10/12/04

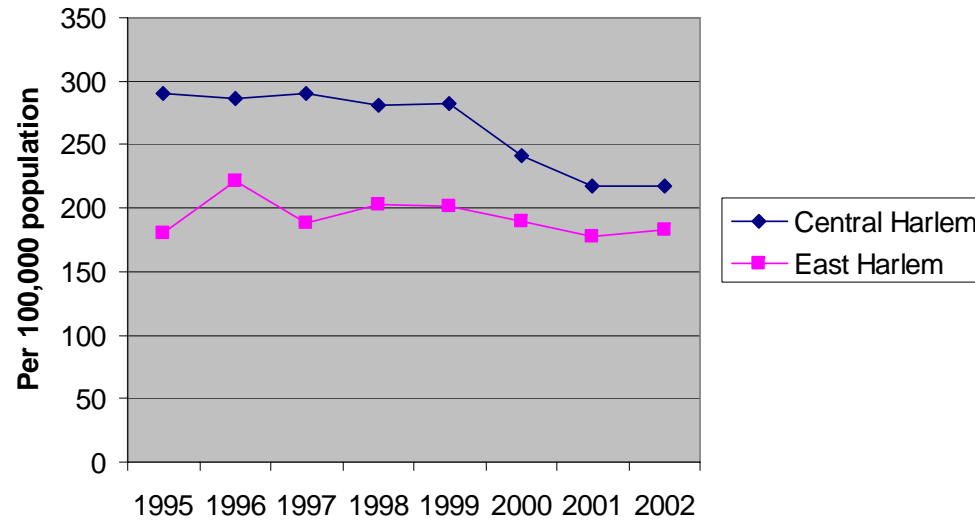
Deaths Due to All Causes



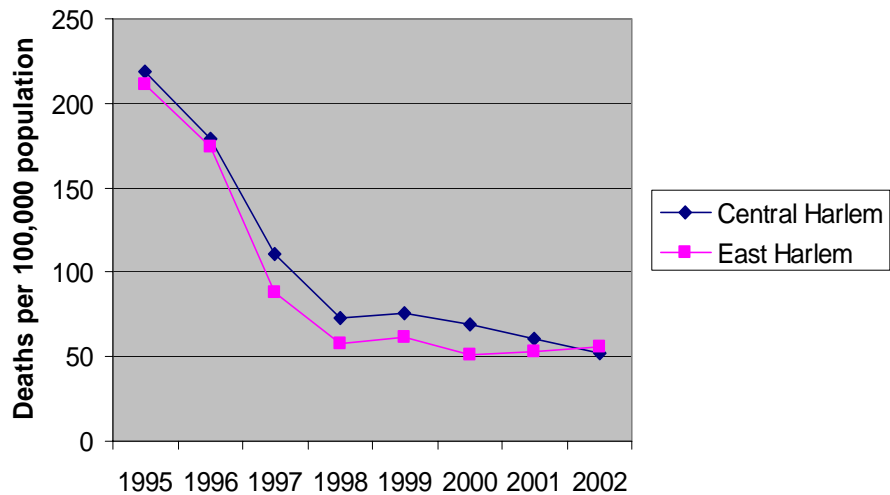
Deaths Due to Heart Disease



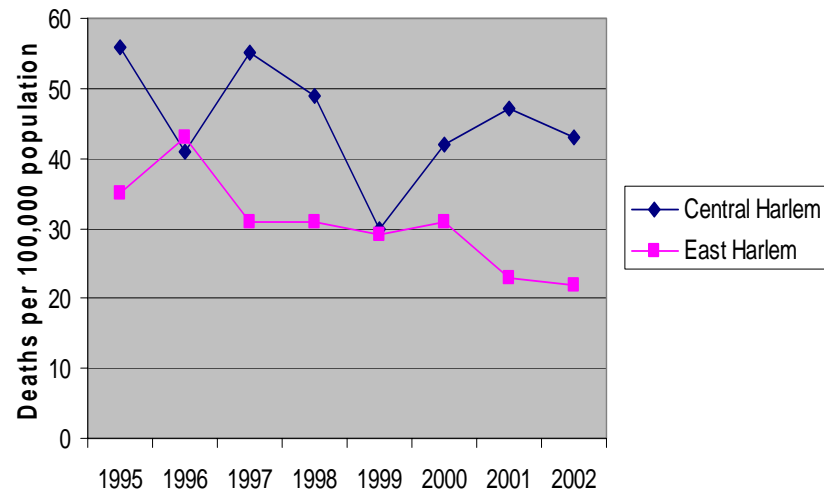
Deaths Due to Cancer



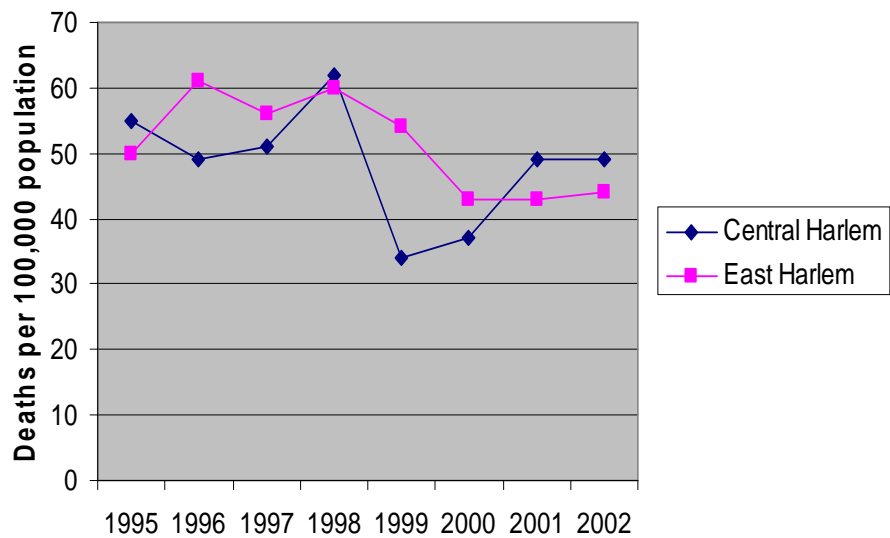
Deaths Due to HIV/AIDS



Deaths Due to Stroke



Deaths Due to Influenza & Pneumonia



Deaths Due to Diabetes

